

Government of India  
Ministry of Earth Sciences  
India Meteorological Department



Press Release

Date: 04<sup>th</sup> October, 2024

Time of Issue: 1300 hours IST

**Subject: Enhanced rainfall activity very likely over Northeast India, Kerala & Mahe, Tamil Nadu, Puducherry & Karaikal during next 5-6 days.**

**Realised weather during past 24 hours till 0830 hours IST of today (Annexure I)**

**Heavy to very Heavy rainfall with extremely heavy fall** at isolated places over Meghalaya; **Heavy rainfall** at a few places over Arunachal Pradesh; at isolated places over Assam, Sub-Himalayan West Bengal & Sikkim, Bihar, Tamil Nadu, Rayalaseema and Marathwada.

**On further Withdrawal of Southwest Monsoon**

- ✓ The **line of withdrawal of Southwest Monsoon** continues to pass through 30.8°N/81.2°E, Lakhimpur Kheri, Shivpuri, Kota, Udaipur, Deesa, Surendranagar, Junagarh and 21°N/70°E.
- ✓ Conditions are favourable for further **withdrawal of Southwest Monsoon** from remaining parts of West Uttar Pradesh, some more parts Madhya Pradesh, remaining parts of East Rajasthan, some more parts of Gujarat and some parts of Maharashtra during next 2-3 days.

**Weather Systems:**

- ✓ A **low pressure area** lies over north Bay of Bengal & adjoining coastal areas of Bangladesh & West Bengal.
- ✓ A **cyclonic circulation** lies over north Bangladesh & adjoining Sub-Himalayan West Bengal extending upto middle tropospheric levels.
- ✓ Yesterday's **cyclonic circulation** over Lakshadweep area now lies over southeast Arabian Sea in lower tropospheric levels.

**Forecast & Warnings (upto 7 days) (Annexure II & III):**

**East & Northeast India**

- ✓ Fairly widespread to widespread light to moderate rainfall very likely over Northeast region during the week; Fairly widespread to widespread light to moderate rainfall very likely over Andaman & Nicobar Islands, West Bengal & Sikkim during next 2 days & Scattered to Fairly widespread light to moderate rainfall during the subsequent 5 days; Isolated to Scattered light to moderate rainfall over the remaining East India region during the week.
- ✓ **Isolated heavy to very Heavy rainfall with extremely heavy falls** over Meghalaya on 04<sup>th</sup> October.

- ✓ **Isolated heavy to very Heavy rainfall** very likely over Sub-Himalayan West Bengal & Sikkim, Assam and Arunachal Pradesh on 04<sup>th</sup> October.
- ✓ **Isolated heavy rainfall** very likely over Nagaland, Manipur, Mizoram & Tripura on 04<sup>th</sup> & 05<sup>th</sup> and over the remaining Northeast India during next 7 days and over Gangetic West Bengal & Bihar on 04<sup>th</sup> October.

### **South Peninsular India**

- ✓ Fairly widespread to widespread light to moderate rainfall very likely over Kerala & Mahe, Lakshadweep, South Interior Karnataka; Scattered to Fairly widespread light to moderate rainfall very likely over Tamil Nadu, Puducherry & Karaikal, Coastal Karnataka, North Interior Karnataka, Coastal Andhra Pradesh & Yanam, Rayalaseema; Isolated to Scattered light to moderate rainfall very likely over Telangana during the week.
- ✓ **Isolated heavy rainfall** very likely over Rayalaseema on 04<sup>th</sup> & 05<sup>th</sup>; South Interior Karnataka during 04<sup>th</sup>-08<sup>th</sup>; Tamil Nadu, Puducherry & Karaikal and Kerala & Mahe during 04<sup>th</sup>-09<sup>th</sup> October.

### **Northwest, West & Central India:**

- ✓ No significant rainfall likely over these regions during next one week.

### **Fishermen warning**

- ✓ Squally weather with wind speed reaching 35 kmph to 45 kmph gusting to 55 kmph is likely to prevail over Gulf of Mannar, most parts of eastcentral Bay of Bengal adjoining parts of north Bay of Bengal on 4<sup>th</sup> October. Fishermen are advised not to venture into these areas during the period.

### **Southwest Monsoon withdrawal Map (ANNEXURE IV)**

**For more details, kindly refer:**

[https://mausam.imd.gov.in/responsive/all\\_india\\_forecast\\_bulletin.php](https://mausam.imd.gov.in/responsive/all_india_forecast_bulletin.php)

**For District wise warnings refer:**

<https://mausam.imd.gov.in/responsive/districtWiseWarningGIS.php>

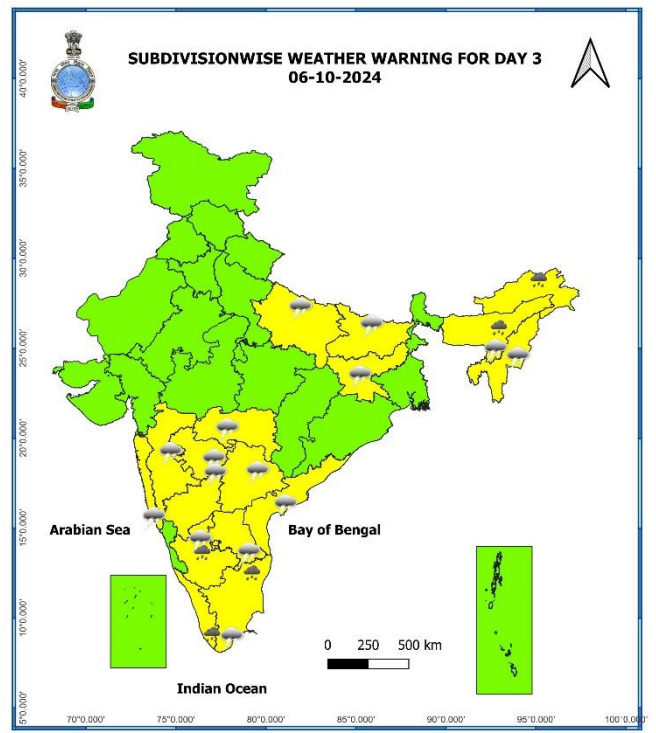
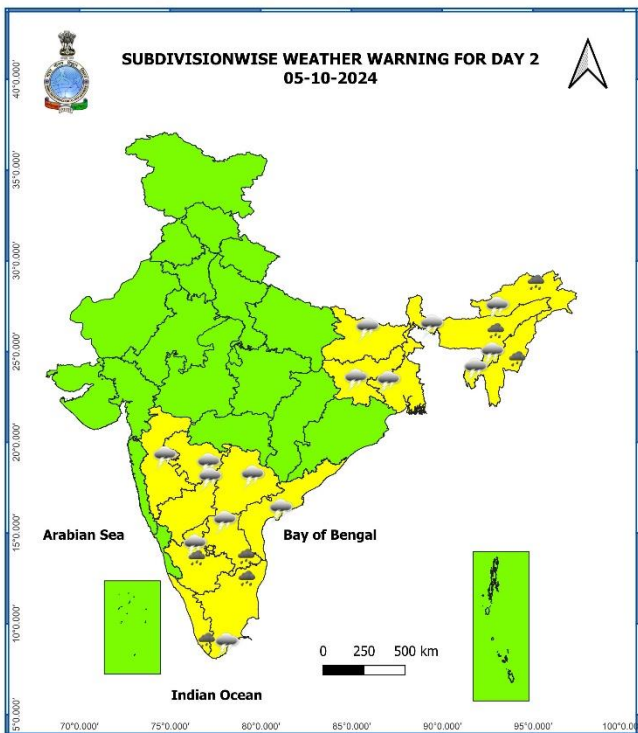
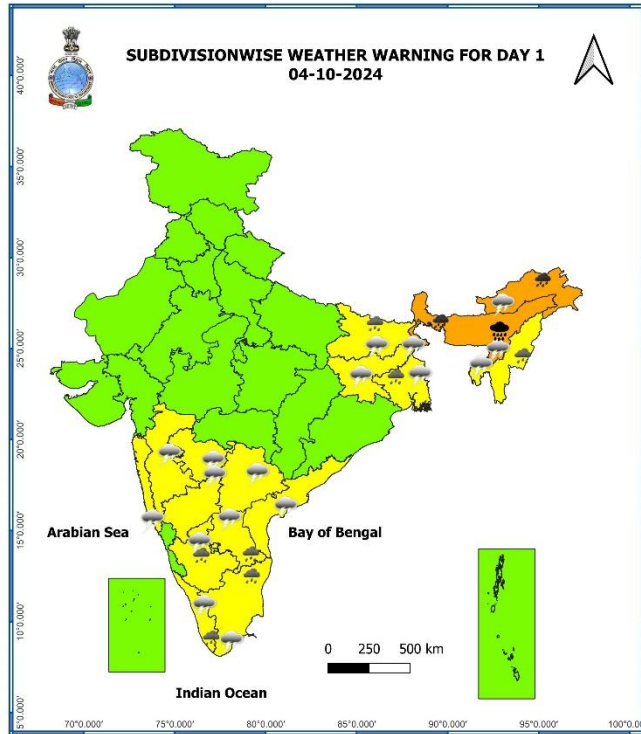
**Significant Rainfall recorded during past 24 hours till 0830 hours IST of today  
04.10.2024 (in cm):**

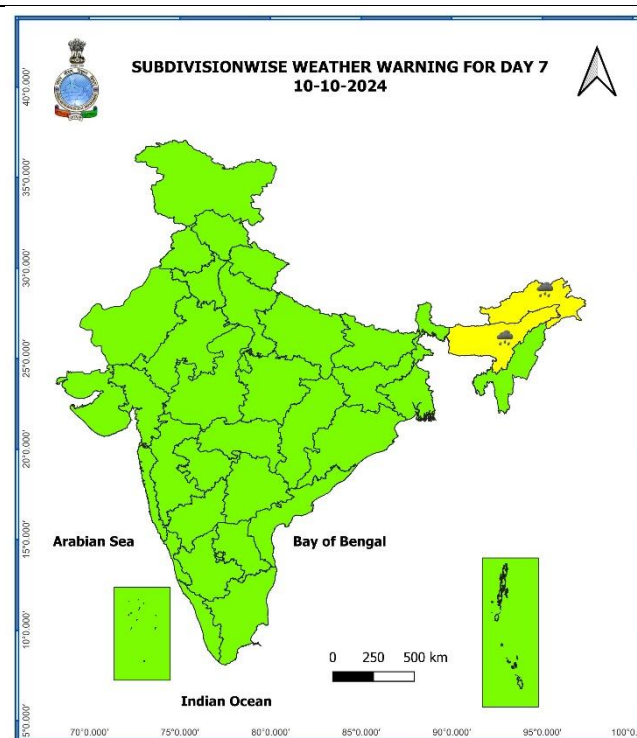
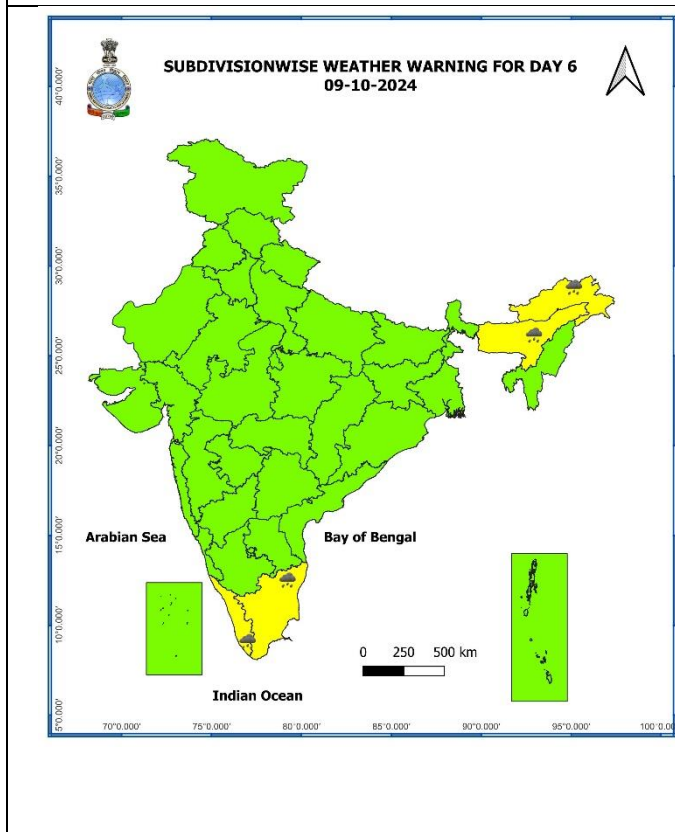
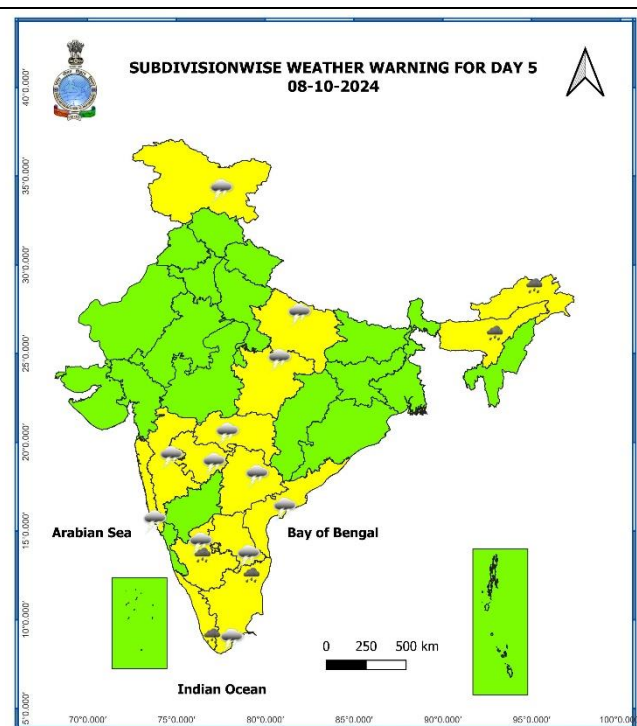
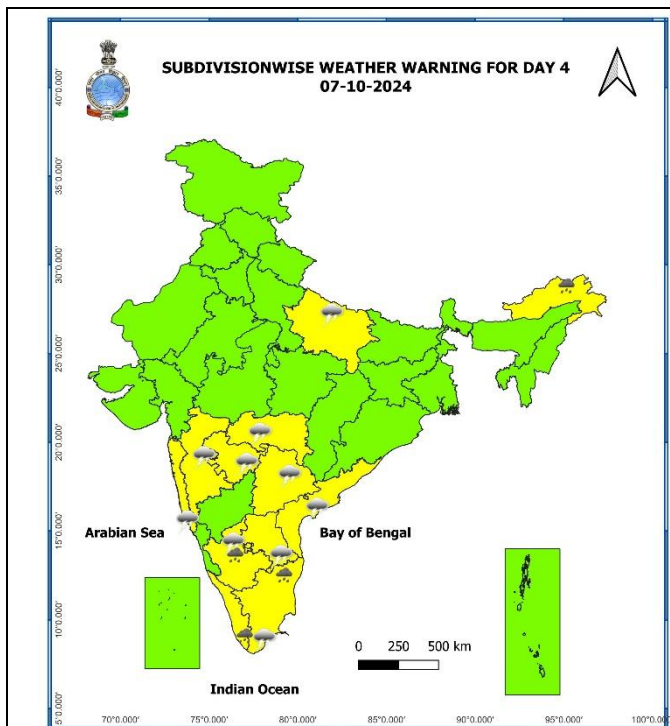
- ❖ **Assam & Meghalaya:** Tura Kvk (dist West Garo Hills) 24, Bhaghmara (dist South Garo Hills) 14, Williamnagar (dist East Garo Hills) 13, Mawsynram (dist East Khasi Hills) 12, Cherrapunji(rkm) (dist East Khasi Hills) 11, Lakhipur (dist Cachar) 10, Nongstein (dist West Khasi Hills) 10, Cherrapunji (dist East Khasi Hills) 9, Jia Bharali N T Xing (dist Shonitpur) 9, Mawkyrwat (dist South West Khasi Hills) 7, Tezpur (dist Shonitpur) 7, Dhupdhara Arg (dist Goalpara) 7, Bhumuraguri (dist Shonitpur) 6, Dharamtul (dist Morigaon) 6, Resubelpara (dist North Garo Hills) 6, Kampur (dist Nagaon) 6, Lakhipur Arg (dist Cachar) 6, Guwahati City Imd (dist Kamrup Metropolitan) 6, Barapani (dist Ri Bhoi) 5, Chauldhowaghat (dist Lakhimpur) 5, J B Gaon (dist Morigaon) 5, Khetri Arg (dist Kamrup (rural)) 5, Mawphlang (dist East Khasi Hills) 5, Sonapur Arg (dist Kamrup Metropolitan) 5, N.lakhimpur/lilabari (dist Lakhimpur) 5, Ranganadi Nt Xing (dist Lakhimpur) 5, Majbat (dist Udalguri) 5;
- ❖ **Arunachal Pradesh:** Huri (aws) (dist Kurung Kumey) 11, Sejosa (dist Pakke Kessang) 11, Yachuli (arg) (dist Lower Subansiri) 9, Nampongcircle (arg) (dist Changlang) 9, Ziro (dist Lower Subansiri) 8, Tuting\_ Aws (dist Upper Siang) 8, Anini\_aws (dist Dibang Valley) 7, Basar\_ Aws (dist West Siang) 7, Itanagar (dist Papumpara) 7, Yazali (dist Lower Subansiri) 7, Basar (dist West Siang) 7, Tuting (dist Upper Siang) 7, Naharlagun\_ Aws (dist Papumpara) 7, Naharlagun (dist Papumpara) 6, Kamba Aws (dist West Siang) 6, Daparijo (dist Upper Subansiri) 5, Kibithu (dist Anjaw) 5, Roing (dist Lower Dibang Valley) 5;
- ❖ **Sub-Himalayan West Bengal & Sikkim:** Rongo (dist Kalimpong) 9, Yuksom (dist Gyalshing) 8, Jhallong (dist Kalimpong) 8, Darjeeling (dist Darjeeling) 5;
- ❖ **Bihar:** Barahar Kothi (dist Purnea) 8, Pirpaiti (dist Bhagalpur) 8, Puraini (dist Madhepura) 7, Bhawanipur (dist Purnea) 6, Raghunathpur (dist Siwan) 5, Sarmera (dist Nalanda) 5, Gurua (dist Gaya) 5, Chausa (dist Madhepura) 5;
- ❖ **Tamilnadu:** Vanur (dist Villupuram) 8, Kudimiyanmalai (dist Pudukkottai) 6, Emeraldad (dist The Nilgiris), RSCL-3 Avalurpettai (dist Villupuram), Vamban KVK AWS (dist Pudukkottai), Panapakkam (dist Ranipet) 5 each;
- ❖ **Royalaseema:** Rajampet (dist Annamayya District) 8, Pullampeta (dist Annamayya District) 5, Gudur (dist Tirupati) 5, Anantpur (dist Anantapuramu) 5;
- ❖ **Marathwada:** Umarga (dist Dharashiv) 7;
- ❖ **KERALA:** Kundala Dam (Idukki) 6;
- ❖ **Telangana:** Nidamanur (dist Nalgonda) 5;
- ❖ **Andaman & Nicobar Islands:** Port Blair (dist South Andaman) 5, Long Island (dist North & Middle Andaman) 5;
- ❖ **Nagaland, Manipur, Mizoram & Tripura:** Chottabekra (dist Imphal West) 5.

## ANNEXURE II

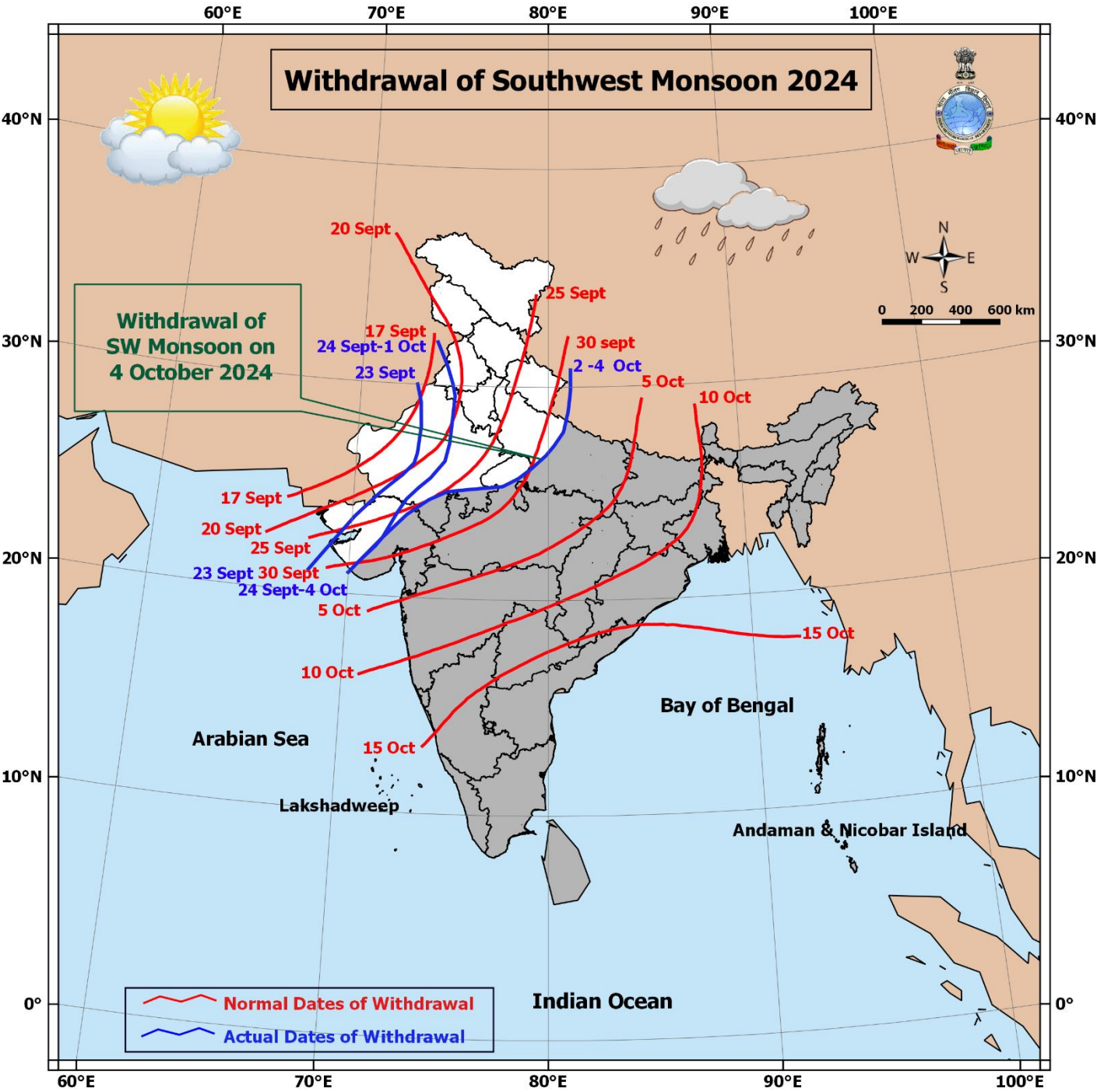
<b>7 Days Rainfall Forecast</b>								
S. No.	Subdivision	04-Oct	05-Oct	06-Oct	07-Oct	08-Oct	09-Oct	10-Oct
		Day 1	Day 2	Day 3	Day 4	Day 5	Day 6	Day 7
1	ANDAMAN & NICOBAR ISLANDS	WS	WS	FWS	FWS	FWS	FWS	FWS
2	ARUNACHAL PRADESH	WS	WS	FWS	SCT	SCT	FWS	FWS
3	ASSAM & MEGHALAYA	WS	WS	SCT	SCT	FWS	FWS	FWS
4	NAGALAND, MANIPUR, MIZORAM & TRIPURA	WS	FWS	FWS	FWS	FWS	FWS	FWS
5	SUB-HIMALAYAN WEST BENGAL & SIKKIM	WS	FWS	SCT	SCT	SCT	SCT	SCT
6	GANGETIC WEST BENGAL	WS	FWS	SCT	SCT	SCT	SCT	SCT
7	ODISHA	ISOL	ISOL	ISOL	ISOL	ISOL	ISOL	ISOL
8	JHARKHAND	ISOL	SCT	SCT	ISOL	ISOL	ISOL	ISOL
9	BIHAR	SCT	SCT	SCT	ISOL	ISOL	ISOL	ISOL
10	EAST UTTAR PRADESH	ISOL	ISOL	SCT	SCT	SCT	SCT	SCT
11	WEST UTTAR PRADESH	DRY	ISOL	ISOL	ISOL	ISOL	ISOL	ISOL
12	UTTARAKHAND	ISOL	ISOL	DRY	DRY	DRY	DRY	DRY
13	HARYANA CHANDIGARH & DELHI	DRY	ISOL	DRY	DRY	ISOL	DRY	DRY
14	PUNJAB	DRY	ISOL	DRY	DRY	ISOL	DRY	DRY
15	HIMACHAL PRADESH	DRY	ISOL	DRY	DRY	ISOL	ISOL	DRY
16	JAMMU & KASHMIR AND LADAKH	DRY	ISOL	DRY	ISOL	SCT	ISOL	DRY
17	WEST RAJASTHAN	DRY	ISOL	DRY	DRY	ISOL	ISOL	DRY
18	EAST RAJASTHAN	DRY	DRY	DRY	DRY	ISOL	ISOL	DRY
19	WEST MADHYA PRADESH	ISOL	ISOL	ISOL	ISOL	ISOL	ISOL	ISOL
20	EAST MADHYA PRADESH	ISOL	ISOL	ISOL	ISOL	ISOL	ISOL	ISOL
21	GUJARAT REGION	ISOL	ISOL	ISOL	ISOL	ISOL	ISOL	ISOL
22	SAURASHTRA & KUTCH	DRY	DRY	DRY	DRY	DRY	DRY	DRY
23	KONKAN & GOA	ISOL	ISOL	SCT	ISOL	ISOL	ISOL	SCT
24	MADHYA MAHARASHTRA	ISOL	ISOL	SCT	ISOL	ISOL	SCT	SCT
25	MARATHAWADA	ISOL	ISOL	ISOL	ISOL	ISOL	SCT	FWS
26	VIDARBHA	ISOL	ISOL	ISOL	SCT	SCT	SCT	SCT
27	CHHATTISGARH	ISOL	ISOL	ISOL	ISOL	SCT	SCT	SCT
28	COASTAL ANDHRA PRADESH & YANAM	SCT	SCT	SCT	SCT	SCT	SCT	SCT
29	TELANGANA	ISOL	ISOL	ISOL	ISOL	ISOL	SCT	SCT
30	RAYALASEEMA	FWS	FWS	SCT	SCT	SCT	SCT	SCT
31	TAMILNADU PUDUCHERRY & KARAIKAL	FWS	FWS	SCT	SCT	FWS	FWS	FWS
32	COASTAL KARNATAKA	SCT	FWS	FWS	FWS	FWS	FWS	FWS
33	NORTH INTERIOR KARNATAKA	SCT	FWS	FWS	SCT	SCT	FWS	FWS
34	SOUTH INTERIOR KARNATAKA	FWS	FWS	FWS	WS	WS	WS	FWS
35	KERALA & MAHE	FWS	WS	WS	WS	WS	WS	WS
36	LAKSHADWEEP	FWS	WS	WS	WS	WS	WS	WS

- As the lead period increases forecast accuracy decreases.





- Action may be taken based on **ORANGE AND RED COLOUR** warnings.
- Vulnerable regions likely urban and hilly areas action may be initiated for heavy rainfall warning.
- As the lead period increases forecast accuracy decreases.



## Impact due to

- ✓ **Isolated heavy to very Heavy rainfall with extremely heavy falls** over Meghalaya; **Isolated heavy to very heavy rainfall** very likely over Sub-Himalayan West Bengal & Sikkim, Arunachal Pradesh and Assam on 04<sup>th</sup> October.
- ✓ **Low to Moderate flash flood risk** likely over few watersheds & neighbourhoods of Arunachal Pradesh, Assam & Meghalaya, Gangetic West Bengal, Sub-Himalayan West Bengal & Sikkim on 04<sup>th</sup> & 05<sup>th</sup> October.

## Impact Expected

- ✓ Localized Flooding of roads, water logging in low lying areas and closure of underpasses mainly in urban areas of the above region.
- ✓ Occasional reduction in visibility due to heavy rainfall.
- ✓ Disruption of traffic in major cities and roadways due to water logging in roads leading to increased travel time.
- ✓ Minor damage to kutcha roads.
- ✓ Possibilities of damage to vulnerable structure.
- ✓ Localized Landslides/Mudslides/landslips/mud slips/land sinks/mud sinks.
- ✓ Damage to horticulture and standing crops in some areas due to inundation and wind.
- ✓ It may lead to riverine flooding in some river catchments (for riverine flooding please visit Web page of CWC)

## Action Suggested

- ✓ Judicious regulation of surface transports including railways and roadways.
- ✓ Check for traffic congestion on your route before leaving for your destination.
- ✓ Follow any traffic advisories that are issued in this regard.
- ✓ Avoid going to areas that face the water logging problems often.
- ✓ Avoid staying in vulnerable structure

## Agromet advisories for Heavy Rainfall likely over various parts of the country

- ✓ Drain out excess water from rice, millets, cowpea, French bean, vegetable crops and orchards in Meghalaya.
- ✓ Make provision for draining out excess water from standing crop fields and fruit orchards to avoid water stagnation in West Bengal & Sikkim, Tamil Nadu, Kerala, South Interior Karnataka, Rayalaseema and North Eastern States.
- ✓ Keep the harvested produce at safer places.
- ✓ Provide mechanical support to horticultural crops & staking to vegetables.



**24 hours Outlook for the Flash Flood Risk (FFR) till 1130 IST of 05-10-2024:**

Low to Moderate flash flood risk likely over few watersheds & neighbourhoods of following Met Sub-divisions during next 24 hours.

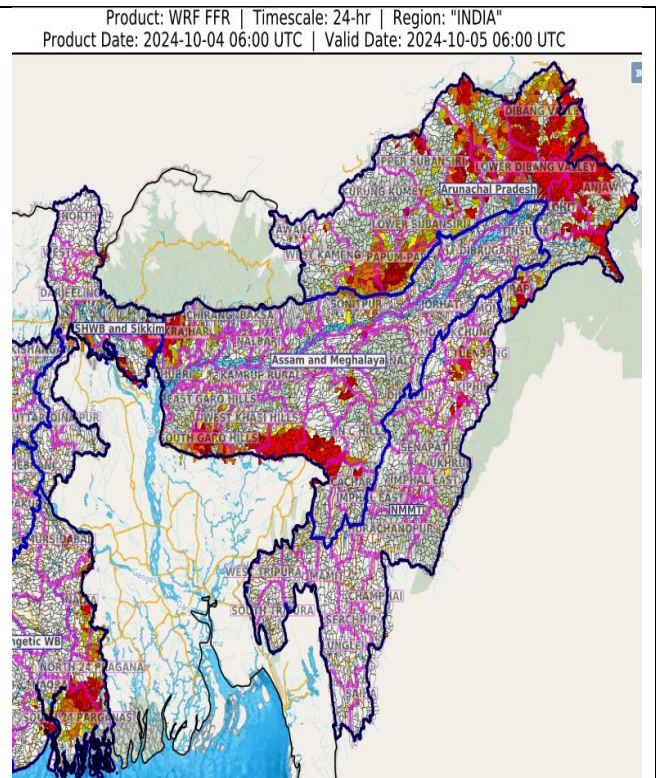
**Arunachal Pradesh-** Changlang, Dibang Valley, East Kameng, East Siang, Lohit, Lower Dibang Valley, Papum-Pare, Tirap, West Siang, Anjaw, Upper Subansiri and Upper Siang districts.

**Assam & Meghalaya-** Cachar, Karbi Analog, Kokrajhar, N.C Hills, Nagaon, Sonitpur, East Khasi Hills, South Garo Hills, West Khasi Hills and Jaintia Hills districts.

**Gangetic West Bengal-** East Medinipur, Mursidabad, Nadia, North 24 Pargana and South 24 Parganas districts.

**Sub-Himalayan West Bengal & Sikkim-** Jalpaiguri and Koch Behar districts.

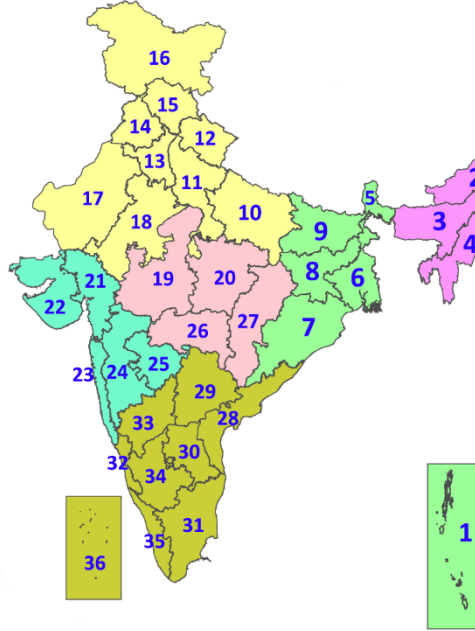
Surface runoff/ Inundation may occur at some fully saturated soils & low-lying areas over area of concern as shown in map due to expected rainfall occurrence in next 24 hours.

**Legends & abbreviations:**

- ❖ **Heavy Rain:**64.5-115.5mm; **Very Heavy Rain:**115.6-204.4mm; **Extremely Heavy Rain:** >204.4mm.
- ❖ **Obsy:** Observatory; **AWS:** Automatic Weather Station; **ARG:** Automatic Rain Gauge; **dist:** District; **NH:** National Highway; **KVK:** Krishi Vigyan Kendra; **DVC:** Damodar Valley Corporation; **PTO:** Part Time Office, **Aero:** Aerodrome, **IAF:** Indian Air Force.
- ❖ **Region wise classification of meteorological Sub-Divisions:**
  - **Northwest India:** Western Himalayan Region (Jammu-Kashmir-Ladakh-Gilgit-Baltistan-Muzaffarabad, Himachal Pradesh and Uttarakhand); Punjab, Haryana-Chandigarh-Delhi; West Uttar Pradesh, East Uttar Pradesh, West Rajasthan and East Rajasthan.
  - **Central India:** West Madhya Pradesh, East Madhya Pradesh, Vidarbha and Chhattisgarh.
  - **East India:** Bihar, Jharkhand, Sub-Himalayan West Bengal & Sikkim; Gangetic West Bengal, Odisha and Andaman & Nicobar Islands.
  - **Northeast India:** Arunachal Pradesh, Assam & Meghalaya and Nagaland, Manipur, Mizoram & Tripura.
  - **West India:** Gujarat Region, Saurashtra & Kutch, Konkan & Goa, Madhya Maharashtra and Marathawada.
  - **South India:** Coastal Andhra Pradesh & Yanam, Telangana, Rayalaseema, Coastal Karnataka, North Interior Karnataka, South Interior Karnataka, Kerala & Mahe, Tamil Nadu, Puducherry & Karaikal and Lakshadweep.

## LEGENDS

1. अंडमान और निकोबार द्वीपसमूह
2. अरुणाचल प्रदेश
3. असम और मेघालय
4. नागालैंड, मणिपुर, मिजोरम और त्रिपुरा
5. उप-हिमालयी पश्चिम बंगाल और सिक्किम
6. गंगीय पश्चिम बंगाल
7. ओडिशा
8. झारखंड
9. बिहार
10. पूर्वी उत्तर प्रदेश
11. पश्चिम उत्तर प्रदेश
12. उत्तराखंड
13. हरियाणा, चंडीगढ़ और दिल्ली
14. पंजाब
15. हिमाचल प्रदेश
16. जम्मू और कश्मीर और लद्दाख
17. पश्चिम राजस्थान
18. पूर्वी राजस्थान
19. पश्चिम मध्य प्रदेश
20. पूर्वी मध्य प्रदेश
21. गुजरात
22. सौराष्ट्र
23. कोंकण और गोवा
24. मध्य महाराष्ट्र
25. मराठवाड़ा
26. विदर्भ
27. छत्तीसगढ़
28. तटीय आंध्र प्रदेश और यनम
29. तेलंगाना
30. रायलसेमा
31. तमिलनाडु, पुडुचेरी और कराईकल
32. तटीय कर्नाटक
33. आंतरिक उत्तरी कर्नाटक
34. आंतरिक दक्षिणी कर्नाटक
35. केरल और माहे
36. लक्षद्वीप



1. Andaman & Nicobar Islands
2. Arunachal Pradesh
3. Assam & Meghalaya
4. Nagaland, Manipur, Mizoram & Tripura
5. Sub-Himalayan West Bengal & Sikkim
6. Gangetic West Bengal
7. Odisha
8. Jharkhand
9. Bihar
10. East Uttar Pradesh
11. West Uttar Pradesh
12. Uttarakhand
13. Haryana, Chandigarh & Delhi
14. Punjab
15. Himachal Pradesh
16. Jammu & Kashmir and Ladakh
17. West Rajasthan
18. East Rajasthan
19. West Madhya Pradesh
20. East Madhya Pradesh
21. Gujarat
22. Saurashtra
23. Konkan & Goa
24. Madhya Maharashtra
25. Marathwada
26. Vidarbha
27. Chhattisgarh
28. Coastal Andhra Pradesh & Yanam
29. Telangana
30. Rayalaseema
31. Tamilnadu, Puducherry & Karaikal
32. Coastal Karnataka
33. North Interior Karnataka
34. South Interior Karnataka
35. Kerala & Mahe
36. Lakshadweep

## SPATIAL DISTRIBUTION (% of Stations reporting)

% Stations	Category	% Stations	Category
76-100	Widespread (WS/Most Places)	26-50	Scattered (SCT/A Few Places)
51-75	Fairly Widespread (FWS/Many Places)	1-25	Isolated (ISOL)

- |                      |                      |              |
|----------------------|----------------------|--------------|
| Fog                  | Heavy Snow           | Cold Wave    |
| Heavy Rain           | Dust Storm           | Cold Day     |
| Very Heavy Rain      | Heat Wave            | Ground Frost |
| Extremely Heavy Rain | Warm Night           |              |
| Thunder & Lightning  | Hot Day              |              |
| Hailstorm            | Hot & Humid          |              |
| Dust Raising Winds   | Strong Surface Winds |              |

### COLOUR CODED WARNING

- No Warning (No Action)
- Watch (Be Aware)
- Alert (Be Prepared To Take Action)
- Warning (Take Action)

### Probabilistic Forecast

Terms	Probability of Occurrence (%)
Unlikely	< 25
Likely	25 - 50
Very Likely	50 - 75
Most Likely	> 75

\* Red colour warning does not mean "Red Alert", Red colour warning means "Take Action".  
Forecast and Warning for any day is valid from 0830 hours IST of day till 0830 hours IST of next day.  
For more details, kindly visit <https://mausam.imd.gov.in> or contact: 011-2434-4599  
(Service to the Nation since 1875)

### DEFINITION/CRITERIA

<b>Rain/ Snow *</b>	<p><b>Heavy:</b> 64.5 to 115.5 mm/cm *</p> <p><b>Very Heavy:</b> 115.6 to 204.4 mm/cm*</p> <p><b>Extremely Heavy:</b> &gt; 204.4 mm/cm *</p>
<b>Heat Wave</b>	<p><b>When maximum temperature of a station reaches <math>\geq 40^\circ\text{C}</math> for plains and <math>\geq 30^\circ\text{C}</math> for hilly regions</b></p> <p><b>(a) Based on Departure from normal</b></p> <p><b>Heat Wave:</b> Maximum Temperature Departure from normal <math>4.5^\circ\text{C}</math> to <math>6.4^\circ\text{C}</math>.</p> <p><b>Severe Heat Wave:</b> Maximum Temperature Departure from normal <math>\geq 6.5^\circ\text{C}</math></p> <p><b>(b). Based on Actual maximum temperature</b></p> <p><b>Heat Wave:</b> When actual maximum temperature <math>\geq 45^\circ\text{C}</math>.</p> <p><b>Severe Heat Wave:</b> When actual maximum temperature <math>\geq 47^\circ\text{C}</math></p> <p><b>(c). Criteria for heat wave for coastal stations</b></p> <p>When maximum temperature departure is <math>&gt;4.5^\circ\text{C}</math> from normal. Heat Wave may be described provided maximum temperature <math>\geq 37^\circ\text{C}</math></p>
<b>Warm Night</b>	<p><b>When maximum temperature remains <math>40^\circ\text{C}</math></b></p> <p><b>Warm Night:</b> When minimum temperature departure <math>4.5^\circ\text{C}</math> to <math>6.4^\circ\text{C}</math>.</p> <p><b>Severe Warm Night:</b> When minimum temperature departure <math>&gt;6.4^\circ\text{C}</math>.</p>
<b>Cold Wave</b>	<p><b>When minimum temperature of a station <math>\leq 10^\circ\text{C}</math> for plains and <math>\leq 0^\circ\text{C}</math> for hilly regions.</b></p> <p><b>(a). Based on departure</b></p> <p><b>Cold Wave:</b> Minimum Temperature Departure from normal <math>-4.5^\circ\text{C}</math> to <math>-6.4^\circ\text{C}</math>.</p> <p><b>Severe Cold Wave:</b> Minimum Temperature Departure from normal <math>\leq -6.5^\circ\text{C}</math></p> <p><b>(b) Based on actual Minimum Temperature (for Plains only)</b></p> <p><b>Cold Wave :</b> When Minimum Temperature is <math>\leq 4.0^\circ\text{C}</math></p> <p><b>Severe Cold Wave:</b> When Minimum Temperature is <math>\leq 2.0^\circ\text{C}</math></p> <p><b>(c) For Coastal Stations</b></p> <p>When Minimum Temperature departure is <math>\leq -4.5^\circ\text{C}</math> &amp; actual Minimum Temperature is <math>\leq 15^\circ\text{C}</math></p>
<b>Cold Day</b>	<p><b>When minimum temperature of a station <math>\leq 10^\circ\text{C}</math> for plains and <math>\leq 0^\circ\text{C}</math> for hilly regions</b></p> <p><b>Based on departure</b></p> <p><b>Cold Day:</b> Maximum Temperature Departure from normal <math>-4.5^\circ\text{C}</math> to <math>-6.4^\circ\text{C}</math>.</p> <p><b>Severe Cold Day:</b> Maximum Temperature Departure from normal <math>\leq -6.5^\circ\text{C}</math></p>
<b>Fog</b>	<p><b>Phenomenon of small droplets suspended in air and the horizontal visibility <math>&lt; 1\text{km}</math></b></p> <p><b>Moderate Fog:</b> When the visibility between 500-200 metres</p> <p><b>Dense Fog:</b> when the visibility between 50- 200 metres</p> <p><b>Very Dense Fog:</b> when the visibility <math>&lt; 50</math> metres</p>
<b>Thunderstorm</b>	<p><b>Sudden electrical discharges manifested by a flash of light (Lightning) and a sharp rumbling sound (thunder)</b></p>
<b>Dust/Sand Storm</b>	<p><b>An ensemble of particles of dust or sand energetically lifted to great heights by a strong and turbulent wind.</b></p>
<b>Frost</b>	<p><b>Ice deposits on ground</b></p> <p>Air temperature <math>\leq 4^\circ\text{C}</math> ( over Plains)</p>
<b>Squall</b>	<p><b>A strong wind that rises suddenly, lasts for atleast 1 minute.</b></p> <p><b>Moderate:</b> Wind speed 52-61 kmph</p> <p><b>Severe:</b> Wind speed 62-87 kmph</p> <p><b>Very Severe:</b> Wind speed <math>&gt;87</math> kmph</p>
<b>Sea State</b>	<p><b>Effect of various waves in the sea over specific area</b></p> <p><b>Rough to very rough:</b> Wind speed 41-62 kmph (22-33 knots) &amp; Wave height 2.5-6 metre</p> <p><b>High to very high:</b> Wind speed 63-117 kmph ( 34-63 knots) &amp; Wave height 6-14 metre</p> <p><b>Phenomenal:</b> Wind speed <math>&gt;117</math> kmph (<math>&gt;63</math> knots) &amp; Wave height <math>&gt;14</math> metre</p>
<b>Cyclone</b>	<p><b>Cyclonic Storm:</b> Wind speed 62-87 kmph (34-47 knots)</p> <p><b>Severe Cyclonic Storm:</b> Wind speed 88-117 kmph (48-63 knots)</p> <p><b>Very Severe Cyclonic Storm:</b> Wind speed 118-165 kmph (64 - 89 knots)</p> <p><b>Extremely Severe Cyclonic Storm:</b> Wind speed 166-220 kmph (90 -119 knots)</p> <p><b>Super Cyclone Strom:</b> Wind speed <math>&gt;220</math> kmph (<math>&gt;119</math> knots)</p>

\* Red colour warning does not mean "Red Alert", Red colour warning means "Take Action".  
Forecast and Warning for any day is valid from 0830 hours IST of day till 0830 hours IST of next day.  
For more details, kindly visit <https://mausam.imd.gov.in> or contact: 011-2434-4599  
(Service to the Nation since 1875)